



66 Burbank Avenue Picnic Point NSW

4 3 3

Boasting a desirable rear north east aspect and scenic Georges River views, 66 Burbank Avenue, Picnic Point is a renovated split level residence offering superb space, privacy and quality. Ideal for modern families, it has a free flowing layout with bright and airy interiors plus a choice of living and dining zones. There's also a sublime alfresco area and a beautifully landscaped yard. Set in the best street in Picnic Point among multimillion dollar waterfront homes, it's a walk to schools and parks, while close to Panania Station.

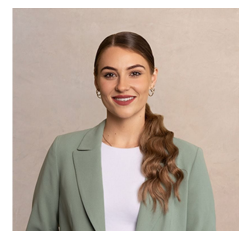
- Spacious living zone, downstairs rumpus plus a choice of dining areas
- Undercover alfresco setting perfect for year round entertaining

[For full version visit the website](https://www.ariarealtyco.com.au)

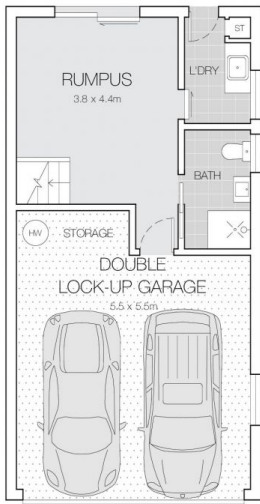
Type : House
Price : \$ 1,800,000
Land Size : 557.4 sqm
View : <https://www.ariarealtyco.com.au/sale/nsw/c/anteburybankstown/picnic-point/residential/house/6988449>



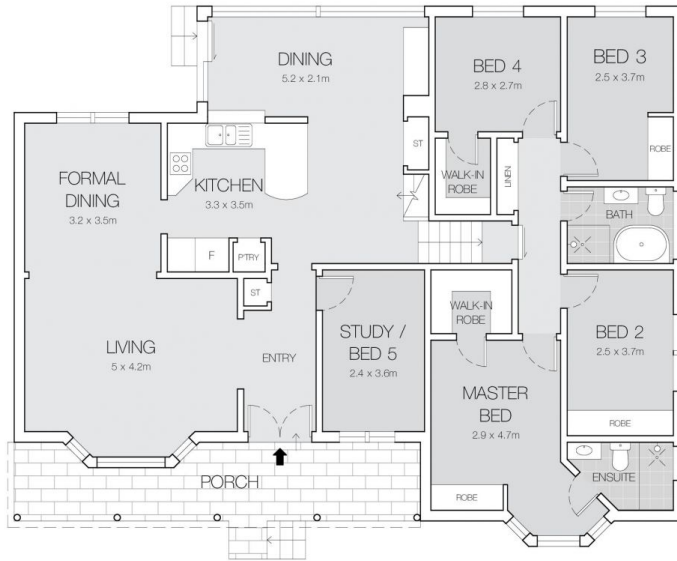
Michael Toumas
02 9025 9948



Laura Raneri
02 9025 9948



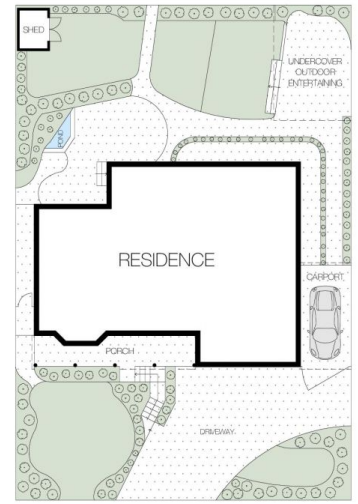
LOWER LEVEL



ENTRY LEVEL

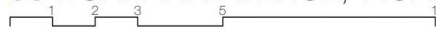


UPPER LEVEL



SITE PLAN

66 BURBANK AVENUE, PICNIC POINT



Scale in metres, Indicative only. Dimensions are approximate.
 All information contained here is gathered from sources we believe to be reliable.
 However, we cannot guarantee its accuracy, and interested persons should rely on their enquiries.