



10/15-19 Ellis Street Condell Park NSW

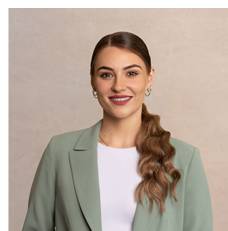
3 2 2

Positioned in a peaceful boutique complex, this townhome balances practicality with style, space and outstanding quality finishes. It presents a fantastic opportunity for growing families, investors and downsizers looking for a turnkey dwelling nestled on a quiet street. Handy to Simmat Avenue's collection of shops, cafes and restaurants, this lifestyle residence is an easy walk to local parklands and Bankstown Basketball Stadium, while bus services to Bankstown Central are also close by.

- Freshly presented interiors embraces sunshine from an easterly aspect
- Large open plan living, dining and kitchen zones with easy outdoor flow
- Undercover patio complete with outdoor kitchen and

[For full version visit the website](https://www.ariarealtyco.com.au)

Type : Townhouse
Price : \$ 860,000
Land Size : 256 sqm
View : <https://www.ariarealtyco.com.au/sale/nsw/canterburybankstown/condell-park/residential/townhouse/6991413>



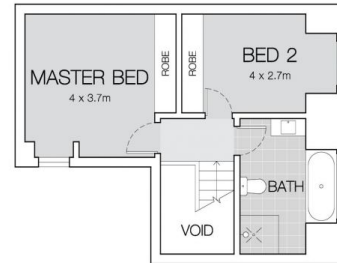
Laura Raneri
02 9025 9948



Ali Saleh
0420 422 372

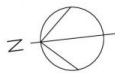
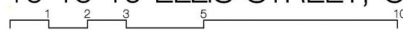


ENTRY LEVEL



FIRST LEVEL

10 15-19 ELLIS STREET, CONDELL PARK



Scale in metres, Indicative only. Dimensions are approximate.
All information contained here is gathered from sources we believe to be reliable.
However, we cannot guarantee its accuracy, and interested persons should rely on their enquiries.