



1 Day Street Lansvale NSW

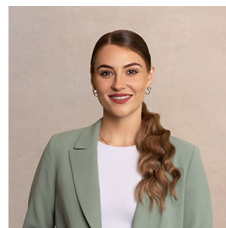
4 🏠 1 🚗

Perfectly set with a parkside location, this incredible 1,518m² parcel of land is ideal for a family to build their dream home or a developer to capitalize on such a brilliant location. Positioned in a cul de sac on a quiet street, this riverside side, free standing home is an opportunity like no other. Just minutes away from the local shopping village, close to various local schools such as Canley Vale High School, Lansvale East Public School and Carramar Public School - this home is waiting for you to make it yours.

- Park and riverside location, in a quiet cul de sac
- Offering a massive 1,518m² of land to build your dream home
- Minutes away from the shopping village, local schools and popular eateries

[For full version visit the website](https://www.ariarealtyco.com.au)

Type : House
Price : \$ 775,000
Land Size : 1518 sqm
View : <https://www.ariarealtyco.com.au/sale/nsw/liv-erpool-fairfield/lansvale/residential/house/6991415>



Laura Raneri
02 9025 9948



Michael Toumas
02 9025 9948