

## 28 Caroline Crescent Georges Hall NSW

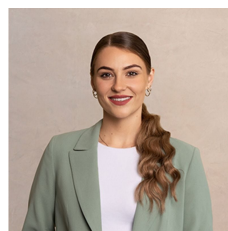
5 2 3

Perfectly positioned backing onto the lush Wilton Reserve, this outstanding family home presents an enticing lifestyle opportunity. This stunning residence features ample living and dining spaces. The double storey design has an undercover alfresco entertaining area stepping out to the grassed backyard. It's convenient location is just a stroll to local schools, Crest Sporting Complex, cafés, restaurants and bus links, with numerous major shopping centres and the Hume Highway only minutes away.

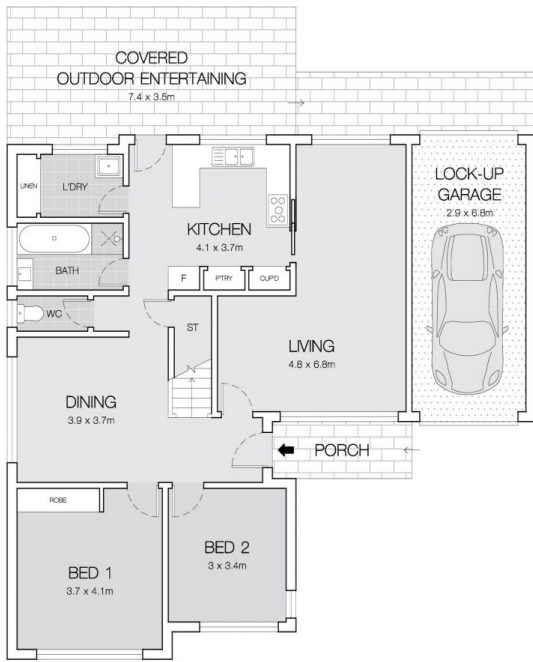
- Multiple living spaces across two levels includes large dining zone
- Established front and back yards, big covered outdoor entertaining area
- Neat functional kitchen features stainless gas stove

[For full version visit the website](https://www.ariarealtyco.com.au)

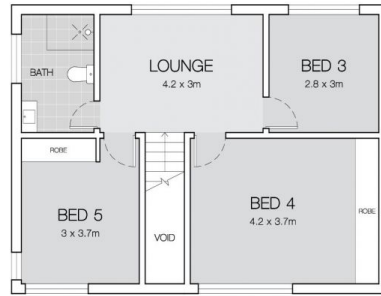
**Type** : House  
**Price** : \$ 1,195,000  
**Land Size** : 556 sqm  
**View** : <https://www.ariarealtyco.com.au/sale/nsw/canterburybankstown/georges-hall/residential/house/6991457>



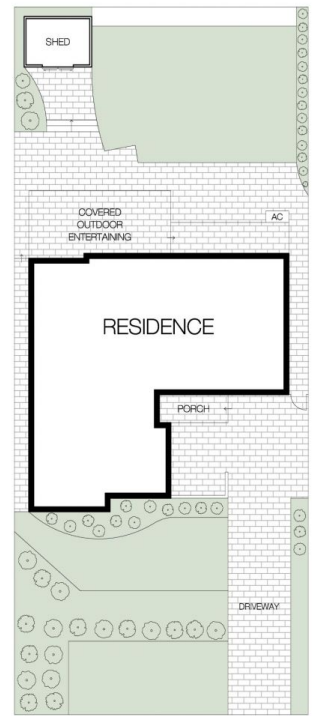
**Laura Raneri**  
 02 9025 9948



GROUND FLOOR



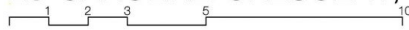
FIRST FLOOR



SITE PLAN



## 28 CAROLINE CRESCENT, GEORGES HALL



Scale in metres, Indicative only. Dimensions are approximate.  
 All information contained here is gathered from sources we believe to be reliable.  
 However, we cannot guarantee its accuracy, and interested persons should rely on their enquiries.