



**3/46-48 Matthews Street Punchbowl NSW**

2 2 1

Double brick residence with alluring architectural style in a prime address

Promising a lifestyle of absolute comfort and convenience, this architecturally designed townhouse offers superb space and modern finishes throughout.

Although currently tenanted, this double brick home would be ideal for first homebuyers, investors, upsizers, downsizers or professional couples. It's set at the front of a small boutique block in a central location, an easy walk from everyday essentials including Punchbowl Public School and Punchbowl Station, as well as shopping and dining precincts.

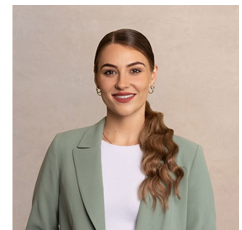
- Bright free flowing living, dining and kitchen zone leading outdoors

**Type** : Townhouse

**View** : <https://www.ariarealtyco.com.au/sale/nsw/canterburybankstown/punchbowl/residential/townhouse/6992467>

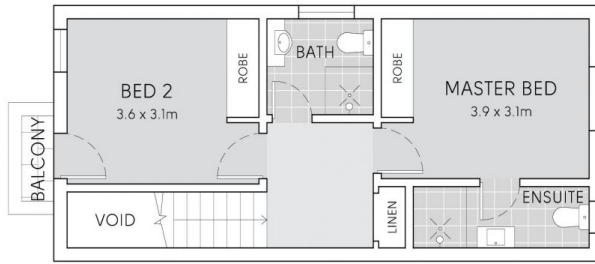
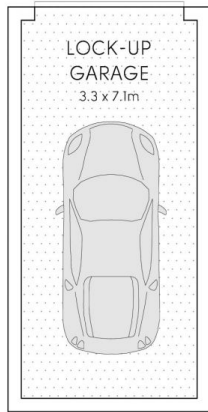


**Michael Toumas**  
02 9025 9948

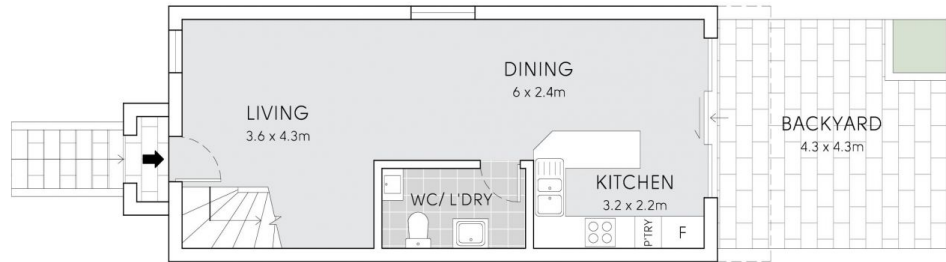


**Laura Raneri**  
02 9025 9948

[For full version visit the website](https://www.ariarealtyco.com.au)



FIRST FLOOR



GROUND FLOOR



3/46-48 MATTHEWS STREET, PUNCHBOWL

Scale in metres, Indicative only. Dimensions are approximate.  
All information contained here is gathered from sources we believe to be reliable.  
However, we cannot guarantee its accuracy, and interested persons should rely on their enquiries.