



35 Victoria Road Punchbowl NSW

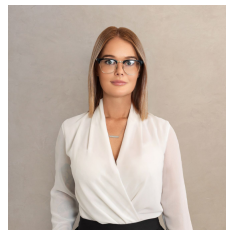
4 2 2

Charming, well-presented and exceptionally spacious, this residence provides a ready made family home within a quiet sanctuary. Enjoying the ease of a single level layout, this home features an open living and dining zone, well-presented kitchen with a 5 burner gas cooktop, stainless steel appliances and four bedrooms all with built in wardrobes and split system air con, two bathrooms, an expansive grassed backyard, perfect for kids and pets, complete with ample secure off street parking.

Centrally located near Punchbowl train station, shopping precincts, Canterbury Hospital, St Jerome's Catholic Primary School, Punchbowl Public School, local eateries and parks.

Type : House

View : <https://www.ariarealtyco.com.au/lease/nsw/canterburybankstown/punchbowl/residential/house/7072508>



Samantha Ryan
02 9025 9948

[For full version visit the website](https://www.ariarealtyco.com.au)