



## 497 Henry Lawson Drive Milperra NSW

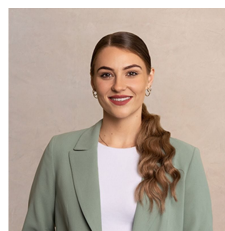
6 2 5

Reconfigured and renovated throughout, this superb dual level property presents a 6 bedroom, dual living home with accommodation spread across 2 levels - creating an incredible offering for multi-generational families or investors seeking immediate returns. The spacious interiors are complemented by an enormous outdoor zone, with unique appeal for a wide range of potential occupants. The home sits on 1300 sqm in a prime locale, walking distance to Western Sydney University and steps to the popular Flower Power Garden Centre.

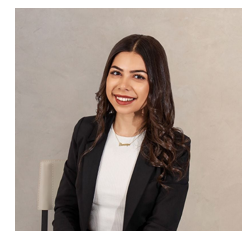
Dual family living/rental potential, this home offers generous lounge/dining zones awash with natural light. Impressive leisure spaces with broad balconies and park-like backyard. Practical contemporary kitchens,

[For full version visit the website](https://www.ariarealtyco.com.au)

**Type** : House  
**Price** : \$ 1,200,000  
**Land Size** : 1300 sqm  
**View** : <https://www.ariarealtyco.com.au/sale/nsw/canterburybankstown/milperra/residential/house/7078947>



**Laura Raneri**  
02 9025 9948



**Dominique El-Tahan**  
02 9025 9948

