



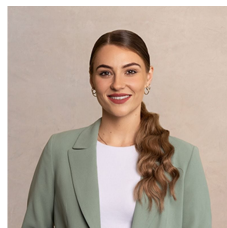
## 39 Thomas Street Picnic Point NSW

3 2 5

Set on a 632 sqm block beside one of the area's best schools, this beautifully maintained dual level home is perfect for families, investors or developers seeking an opportunity to knock down and rebuild (STCA). Complete with multiple living zones, a private yard and in-ground pool, it's ready to enjoy as is, with enormous future potential for anyone looking to capitalise on a superb location. The home has gate access to Picnic Point Public School, while shops and transport options are nearby.

- Open plan living/dining space, self-contained lower level rumpus room
- Generous backyard with paved entertaining area, level lawn and pool
- Spacious kitchen has electric cooktop, breakfast bar and

**Type** : House  
**Land Size** : 632 sqm  
**View** : <https://www.ariarealtyco.com.au/sale/nsw/canterburybankstown/picnic-point/residential/house/7123413>



**Laura Raneri**  
02 9025 9948

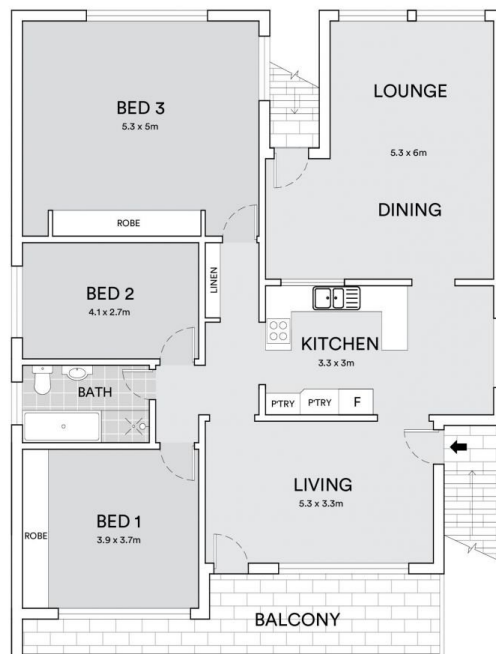


**Michael Toumas**  
02 9025 9948

[For full version visit the website](https://www.ariarealtyco.com.au)



LOWER LEVEL



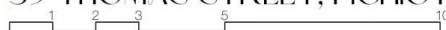
ENTRY LEVEL



SITE PLAN



## 39 THOMAS STREET, PICNIC POINT



Scale in metres. Indicative only. Dimensions are approximate.  
All information contained here is gathered from sources we believe to be reliable.  
However, we cannot guarantee its accuracy, and interested persons should rely on their enquiries.