



## 17/12 Alma Road Padstow NSW

3 2 2

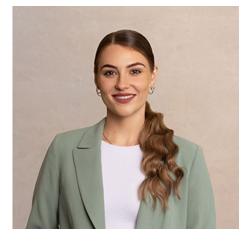
Embracing lush green outlooks and views of Salt Pan Creek positioned higher than the other properties, this spacious townhouse provides a warm and cosy setting for a lifestyle of superb comfort and privacy. It's tucked away in a peaceful complex consisting of mainly owner-occupiers, making it a perfect choice for astute first homebuyers, downsizers and investors alike. It's a walk to buses, parks and waterside walking trails, while a short drive from Padstow train station and arterial roads.

- Open plan living and dining zone provides effortlessly outdoor flow
- Generous rear courtyard enjoys tree lined surrounds and great privacy
- Renovated farmhouse kitchen includes stainless

**Type** : Townhouse  
**Price** : \$ 870,500  
**Land Size** : 216 sqm  
**View** : <https://www.ariarealtyco.com.au/sale/nsw/canterburybankstown/padstow/residential/townhouse/7161741>

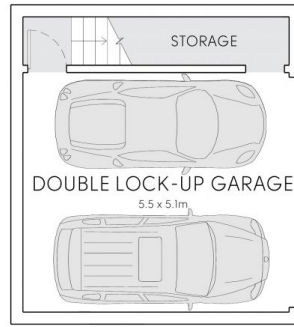
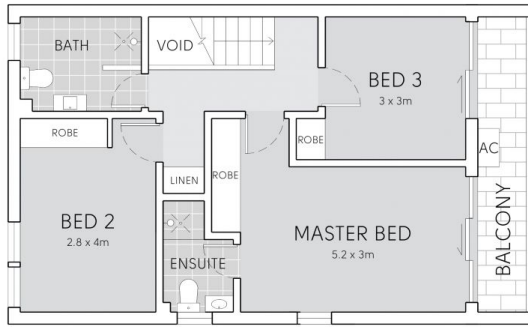


**Michael Toumas**  
02 9025 9948

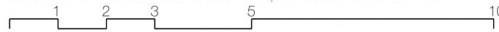


**Laura Raneri**  
02 9025 9948

[For full version visit the website](https://www.ariarealtyco.com.au)



## 17/12 ALMA ROAD, PADSTOW



Scale in metres. Indicative only. Dimensions are approximate.  
 All information contained here is gathered from sources we believe to be reliable.  
 However, we cannot guarantee its accuracy, and interested persons should rely on their enquiries.