



2/101-103 Courtney Road Padstow NSW

3 **2** **2**

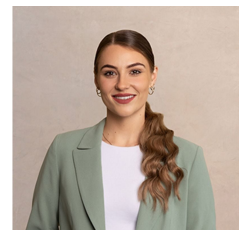
Embracing a superb sense of light, space and privacy, this easycare villa is ready to be enjoyed by young families, downsizers, professional couples and investors. It has distinct living and dining areas enhanced with modern finishes, while a landscaped backyard is perfect for pets or children. Tucked away in a boutique complex of only eight, it's set on a quiet street opposite Richardson Reserve, with schools, shops, Padstow Station and Georges River National Park all just moments away.

- Single level layout has defined living and dining zones leading outside
- Paved outdoor area and level grassed backyard enjoying plenty of sun
- Large light filled kitchen offers gas cooktop and stainless

Type : Villa
Land Size : 269 sqm
View : <https://www.ariarealtyco.com.au/sale/nsw/canterburybankstown/padstow/residential/villa/7183423>

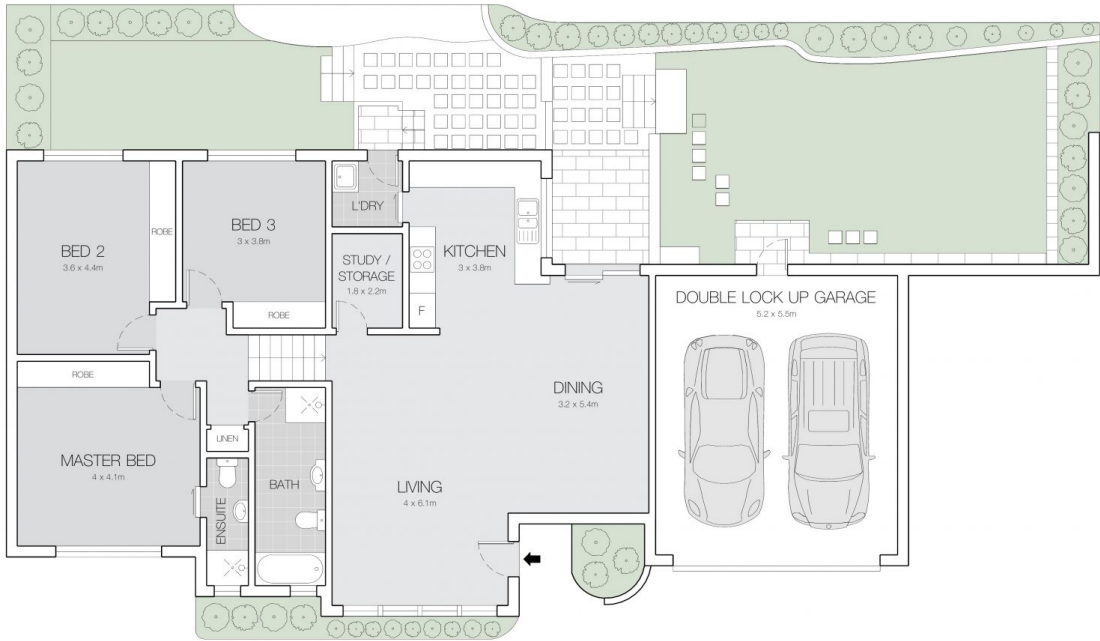


Michael Toumas
02 9025 9948



Laura Raneri
02 9025 9948

[For full version visit the website](https://www.ariarealtyco.com.au)



2/101-103 COURTNEY ROAD, PADSTOW



Scale in metres, Indicative only. Dimensions are approximate.
 All information contained here is gathered from sources we believe to be reliable.
 However, we cannot guarantee its accuracy, and interested persons should rely on their enquiries.