

8/12 Central Road Beverly Hills NSW

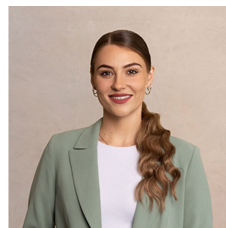
3 1 2

Freshly renovated for you to instantly enjoy, this stylish villa is designed to offer size, comfort and a relaxed indoor/outdoor lifestyle. The ultra-spacious interiors feature inviting living areas complemented by modern décor, while outside awaits an expansive deck for entertaining. Further to love, the home is set at the rear of a boutique complex of eight and has exclusive access to Bridgeview Road Reserve. The convenient locale is 1.5 kilometres from shops, cafés and Beverly Hills Station.

- Bright lounge room with new floating timber floorboards adjoins study
- Generous dining space opens to tranquil alfresco entertainers' retreat
- Surrounded by established gardens and fenced for

[For full version visit the website](https://www.ariarealtyco.com.au)

Type : Villa
Land Size : 288 sqm
View : <https://www.ariarealtyco.com.au/sale/nsw/st-george/beverly-hills/residential/villa/718344>
1



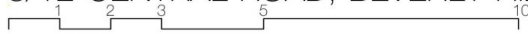
Laura Raneri
02 9025 9948



Michael Toumas
02 9025 9948



8/12 CENTRAL ROAD, BEVERLY HILLS



Scale in metres. Indicative only. Dimensions are approximate.
All information contained here is gathered from sources we believe to be reliable.
However, we cannot guarantee its accuracy, and interested persons should rely on their enquiries.