



7 Birdwood Avenue Wattle Grove NSW

4 3 1

Positioned directly opposite the leafy grounds of John Edmonson VC Memorial Park, this brand new residence embraces a superb sense of privacy in a relaxed easycare setting. Flawlessly crafted and impeccably appointed throughout, it boasts contemporary interiors enhanced by soaring 2.9 metre ceilings and seamless transitions outdoors. The property is set on a level block close to nature walks and bus services, while just moments from Hammondville Public School and the M5 motorway for city access.

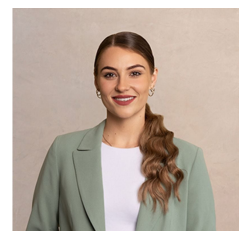
- Choice of generous living zones include the open plan family room
- Oversized covered patio with barbecue area and child-friendly lawns

[For full version visit the website](https://www.ariarealtyco.com.au)

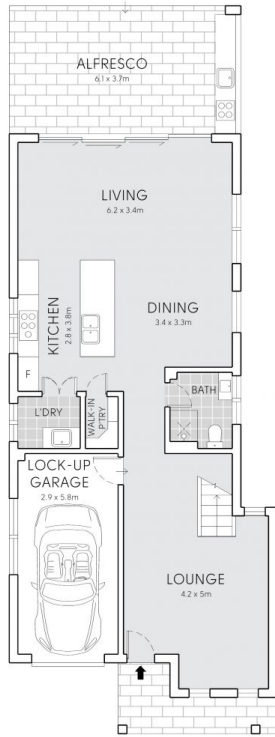
Type : Semi Detached
Price : \$ 1,190,000
Land Size : 306.1 sqm
View : <https://www.ariarealtyco.com.au/sale/nsw/liv erpool-fairfield/wattle-grove/residential/semi-detached/7211490>



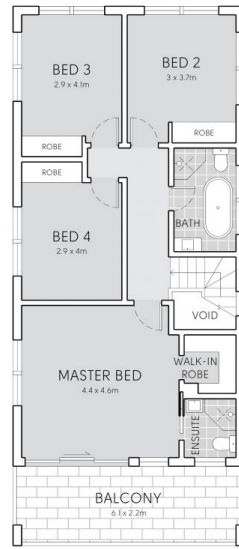
Michael Toumas
02 9025 9948



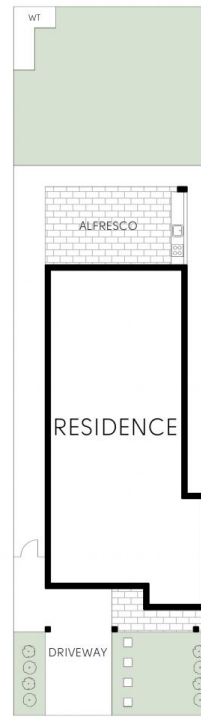
Laura Raneri
02 9025 9948



GROUND FLOOR



FIRST FLOOR



SITE PLAN

7 BIRDWOOD AVENUE, WATTLE GROVE



Scale in metres, Indicative only. Dimensions are approximate.
All information contained here is gathered from sources we believe to be reliable.
However, we cannot guarantee its accuracy, and interested persons should rely on their enquiries.