

**19 Hinkler Avenue Condell Park NSW**

**4** **1** **2**

WELCOME TO YOUR NEW HOME?.

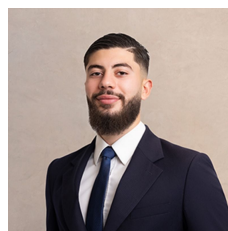
Discover the perfect family home that blends comfort, style, and practicality. Embrace the convenience of single-level living, the allure of a spacious backyard, and the added bonus of a separate teenage retreat. Nestled in a tranquil neighborhood, this property presents an array of features that make it an ideal haven for modern living.

**FEATURES OF THE HOME:**

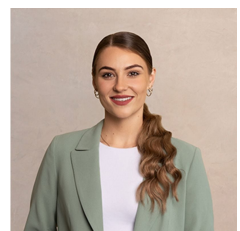
- Boasting a generous 557sqm block and sweeping 16.6M Frontage offering great Duplex potential (Subject to council approval)
- Solid brick veneer construction flaunting a spacious single

[For full version visit the website](https://www.ariarealtyco.com.au)

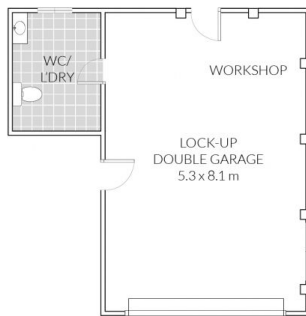
**Type** : House  
**Price** : \$ 1,280,000  
**Land Size** : 557 sqm  
**View** : <https://www.ariarealtyco.com.au/sale/nsw/canterburybankstown/condell-park/residential/house/7721491>



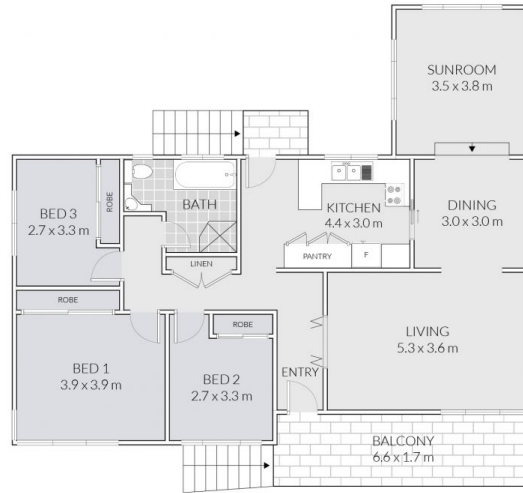
**Zane Saddik**  
02 9025 9948



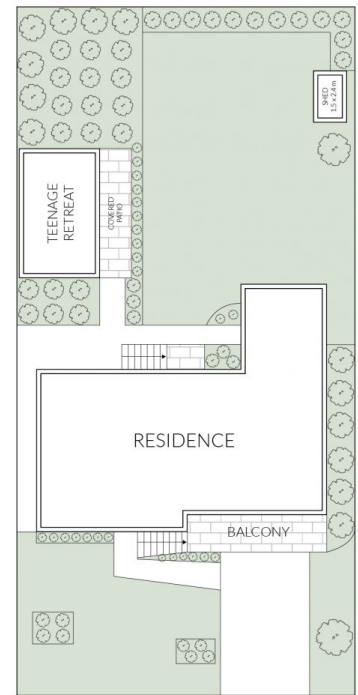
**Laura Raneri**  
02 9025 9948



GROUND FLOOR



FIRST FLOOR



## SITE PLAN



19 HINKLER AVENUE, CONDELL PARK

Scale in metres, indicative only. Dimensions are approximate.  
All information contained here is gathered from sources we believe to be reliable.  
However, we cannot guarantee its accuracy, and interested persons should rely on their enquiries.