



## 24A Gleeson Avenue Condell Park NSW

3 2 2

### WELCOME TO YOUR NEW HOME?.

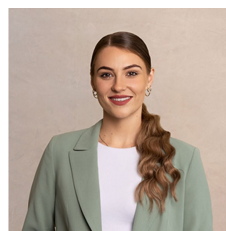
Meticulously renovated French Provincial-inspired residence offers a perfect blend of elegance and modern convenience. From the stunning kitchen to the expansive backyard, Immaculately designed interiors seamlessly integrate with versatile living spaces, making this property a haven for comfortable living and entertaining.

**Type** : House  
**Price** : \$ 1,310,000  
**Land Size** : 782.9 sqm  
**View** : <https://www.ariarealtyco.com.au/sale/nsw/canterburybankstown/condell-park/residential/house/7746625>

### FEATURES OF THE HOME:

- Single Storey, brick veneer home, inspired by the elegance of French provincial design
- Three generously sized bedrooms, all adorned with built-in wardrobes

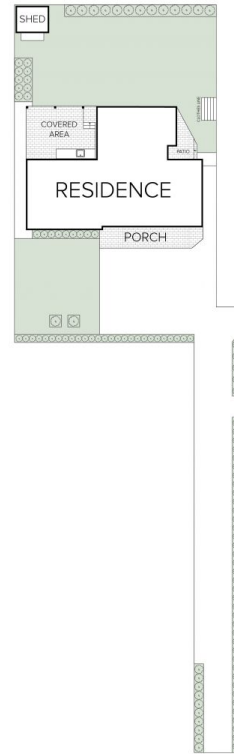
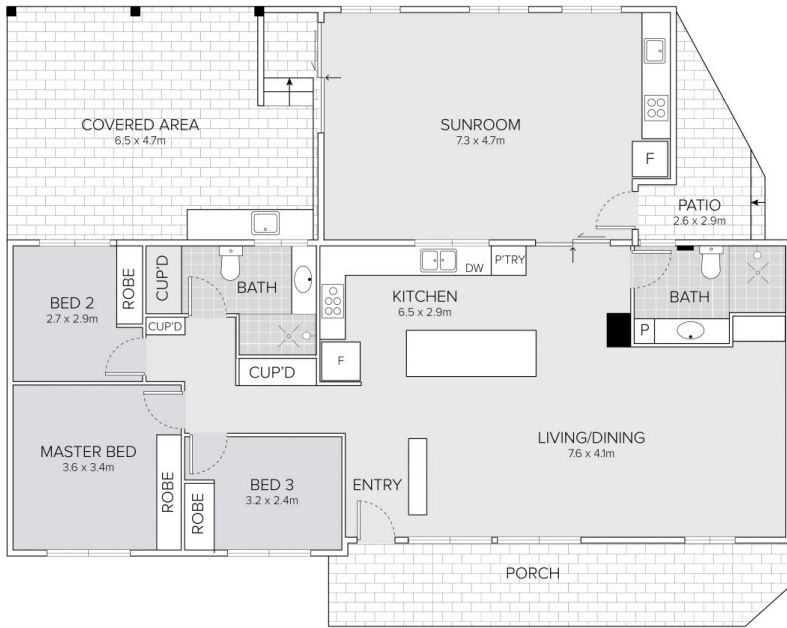
[For full version visit the website](https://www.ariarealtyco.com.au)



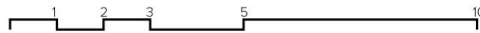
**Laura Raneri**  
02 9025 9948



**Michael Toumas**  
02 9025 9948



24A Gleeson Avenue, Condell Park



Scale in metres, Indicative only. Dimensions are approximate.  
 All information contained here is gathered from sources we believe to be reliable.  
 However, we cannot guarantee its accuracy, and interested persons should rely on their enquiries.