

9/34 Remembrance Avenue Warwick Farm NSW

2 1 1

WELCOME TO YOUR NEW PROPERTY?

Double brick gem offers a cosy and comfortable living space with stunning area views. Step into a home that exudes warmth and charm, where modern comforts meet panoramic beauty. This apartment is an ideal choice for first home buyers looking to step into the property market and investors seeking a valuable addition to their portfolio. With its prime location, modern amenities, and stunning area views, this home offers a perfect blend of comfort and style.

FEATURES OF THE PROPERTY:

- Two spacious bedrooms, each equipped with built-in

[For full version visit the website](https://www.ariarealtyco.com.au/sale/nsw/liverpool-fairfield/warwick-farm/residential/apartment/7898031)

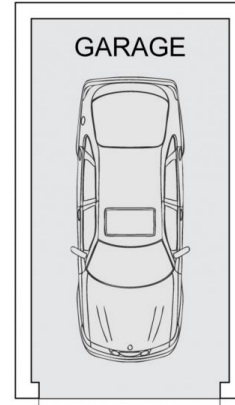
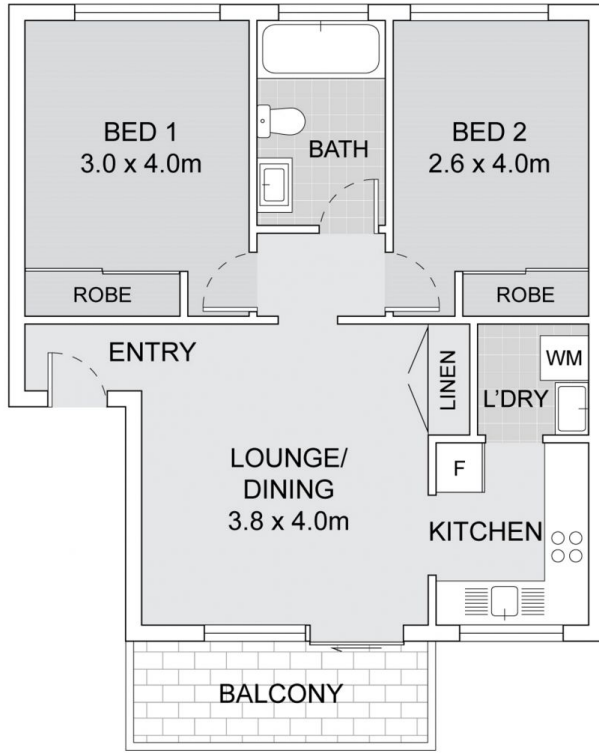
Type : Apartment
Price : \$ 347,000
Land Size : 80 sqm
View : <https://www.ariarealtyco.com.au/sale/nsw/liverpool-fairfield/warwick-farm/residential/apartment/7898031>



Kyrollos Keriakos
02 9025 9948



Ali Abouloukme
02 9025 9948



9/34 Remembrance Avenue, Warwick Farm



Scale in metres. Indicative only. Dimensions are approximate.
 All information contained here in is gathered from sources we believe to be reliable.
 However we cannot guarantee its accuracy and interested persons should rely on their own enquires.