



140 Robertson Street Guildford NSW

3 1 2

WELCOME TO YOUR NEW PROPERTY?

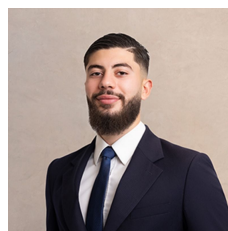
This original three bedroom home offers immense potential for expansion or redevelopment (STCA). With a spacious backyard, updated bathroom, and functional kitchen with plenty of storage, this property is ideal for investors or developers looking to capitalise on its prime position. This is an incredible opportunity to secure your slice on this remarkable property!

FEATURES OF THE PROPERTY:

- Possibility for future development (STCA), this property boasts a prime land size and frontage, offering ample opportunities for expansion or redevelopment.

[For full version visit the website](https://www.ariarealtyco.com.au)

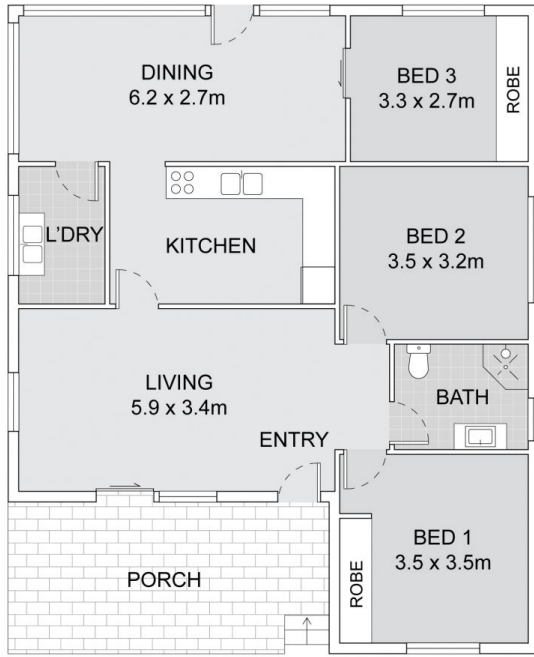
Type : House
Price : \$ 1,365,000
Land Size : 703 sqm
View : <https://www.ariarealtyco.com.au/sale/nsw/p/arramatta/guildford/residential/house/7991996>



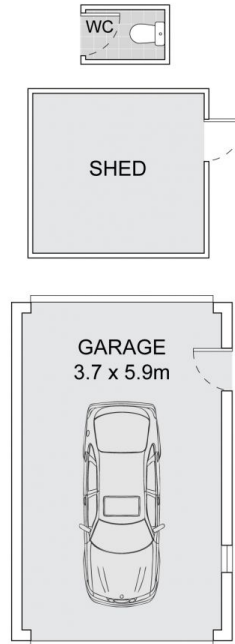
Zane Saddik
02 9025 9948



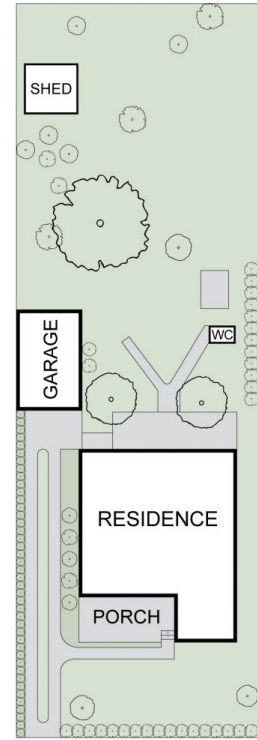
Michael Toumas
02 9025 9948



GROUND FLOOR

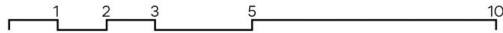


(NOT IN POSITION)



SITE PLAN

140 Robertson Street, Guildford



Scale in metres. Indicative only. Dimensions are approximate.
 All information contained here in is gathered from sources we believe to be reliable.
 However we cannot guarantee its accuracy and interested persons should rely on their own enquiries.