



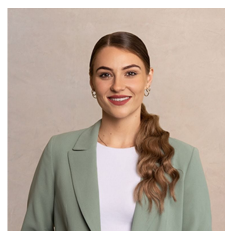
## 62 Caroline Crescent Georges Hall NSW

4 2 2

### WELCOME TO YOUR NEW PROPERTY?

This brick veneer single-story house offers the perfect blend of comfort and style, making it an ideal choice for both growing families and investors. This property boasts three spacious bedrooms, a studio retreat, and two bathrooms, offering ample space and comfort for all. With an array of modern amenities, including an open-plan kitchen, induction cooking, and a breakfast bar, this home is designed for convenient living. Whether you're looking for a family home or an investment property, this home is sure to meet your needs. Every detail has been carefully crafted to accommodate your lifestyle, inviting you to embrace a life of comfort, convenience, and endless possibilities.

**Type** : House  
**Price** : \$ 1,310,000  
**Land Size** : 556.4 sqm  
**View** : <https://www.ariarealtyco.com.au/sale/nsw/canterburybankstown/georges-hall/residential/house/8001392>

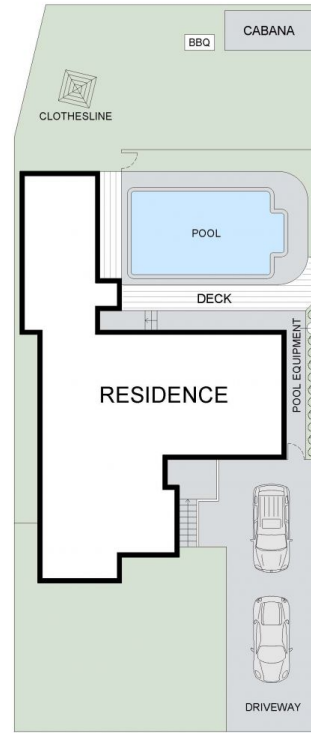
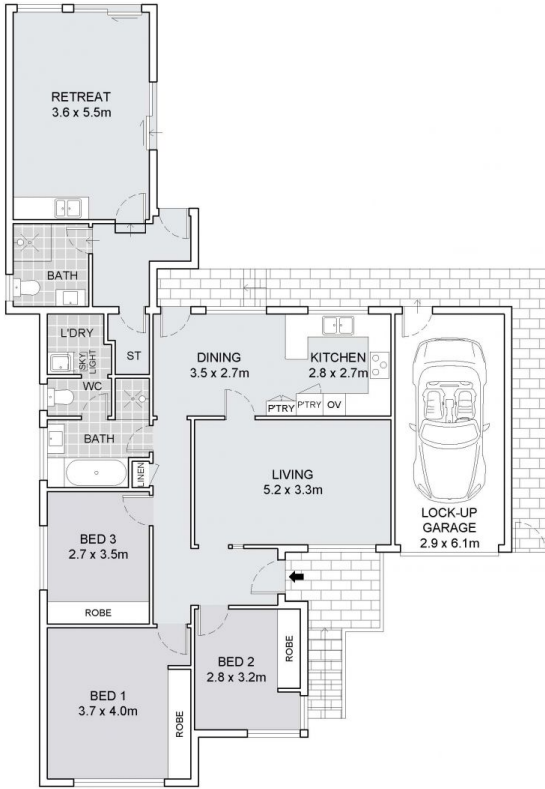


**Laura Raneri**  
02 9025 9948



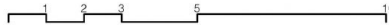
**Francesco Ferrante**  
02 9025 9948

[For full version visit the website](https://www.ariarealtyco.com.au)



SITE PLAN

## 62 Caroline Street, Georges Hall



Scale in metres. Indicative only. Dimensions are approximate.  
 All information contained here is gathered from sources we believe to be reliable.  
 However, we cannot guarantee its accuracy, and interested persons should rely on their enquiries.

INTERNAL AREA: 141m<sup>2</sup>  
 EXTERNAL AREA: 403m<sup>2</sup>  
 LAND AREA: 558m<sup>2</sup>