

### 3 Rudd Close Casula NSW

4 2 2

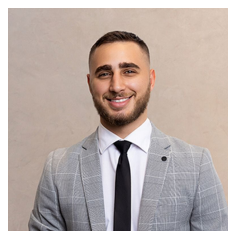
#### WELCOME TO YOUR NEW PROPERTY?

This spacious and inviting family abode is delicately nestled within the serenity of a peaceful cul de sac, offering a serene escape from the hustle and bustle of urban life. Whether you're envisioning it as the perfect ready-to-move-in sanctuary for your family or as a shrewd investment opportunity, this property promises an unparalleled combination of comfort, convenience, and ample space to cater to all your lifestyle needs. With its thoughtfully designed layout and plethora of amenities, it provides the ideal canvas for creating cherished memories and enjoying the quintessential joys of family living.

#### FEATURES OF THE PROPERTY:

[For full version visit the website](https://www.ariarealtyco.com.au)

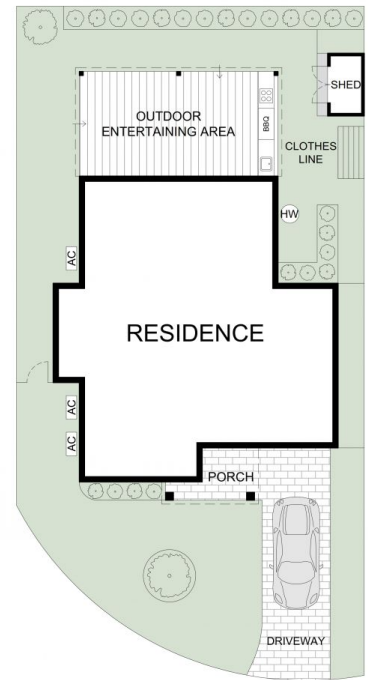
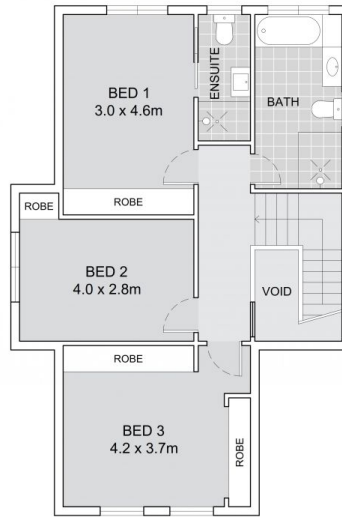
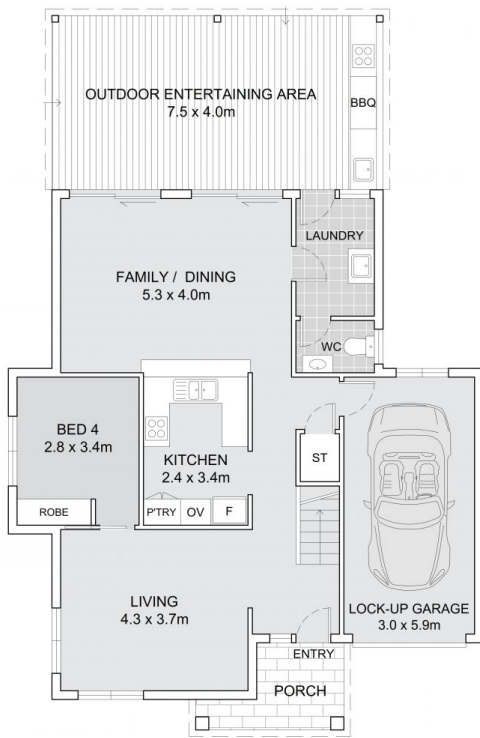
**Type** : House  
**Price** : \$ 980,000  
**Land Size** : 324 sqm  
**View** : <https://www.ariarealtyco.com.au/sale/nsw/liv/erpool-fairfield/casula/residential/house/8027577>



**Ali Abouloukme**  
02 9025 9948



**Kirollos Mina**  
02 9025 9948



GROUND FLOOR

FIRST FLOOR

SITE PLAN

### 3 Rudd Close, Casula



Scale in metres. Indicative only. Dimensions are approximate.  
All information contained here is gathered from sources we believe to be reliable.  
However, we cannot guarantee its accuracy, and interested persons should rely on their enquiries.

INTERNAL AREA: 162m<sup>2</sup>  
EXTERNAL AREA: 221m<sup>2</sup>  
LAND AREA: 324m<sup>2</sup>