



12 Norbis Road Edmondson Park NSW

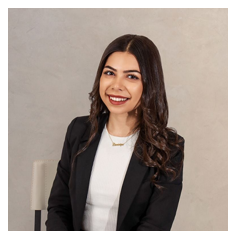
4 2 3

WELCOME TO YOUR NEW PROPERTY

This elegant double-story, brick veneer home designed for family living and entertaining. Located in a sought-after neighborhood, this home offers a blend of modern luxury and practical features, ensuring every family member's needs are met. The thoughtful layout maximises space and light, creating an inviting and warm atmosphere from the moment you enter. With high-quality finishes and contemporary touches throughout, this residence caters to those who appreciate both style and functionality. Whether you're hosting a dinner party or enjoying a quiet evening with family, this home provides the perfect backdrop for all of life's moments. Nestled in a community known for its excellent schools, parks, and convenient amenities, you'll

Type : House
Price : \$ 1,450,000
Land Size : 450.3 sqm
View : <https://www.ariarealtyco.com.au/sale/nsw/liv erpool-fairfield/edmondson-park/residential/ house/8071196>

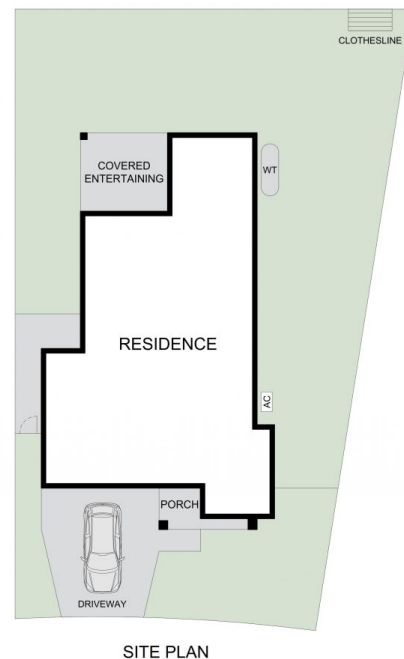
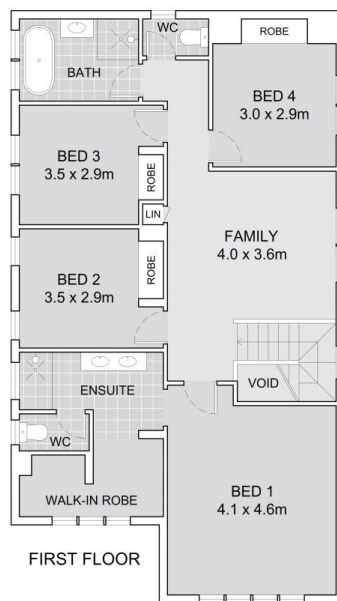
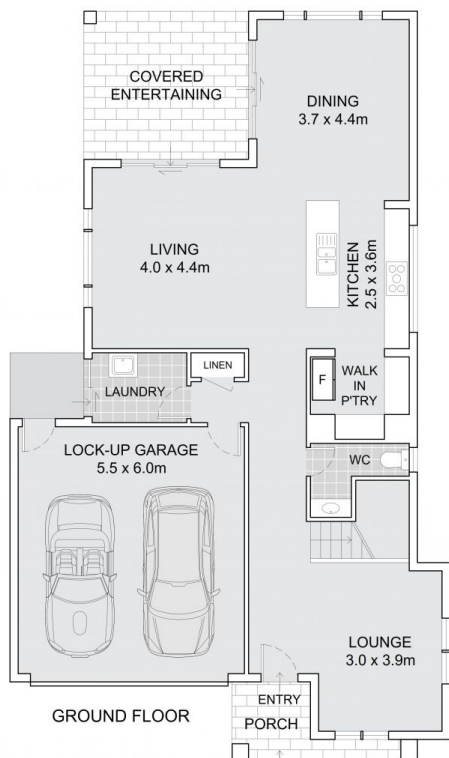
[For full version visit the website](https://www.ariarealtyco.com.au)



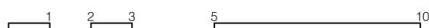
Dominique El-Tahan
02 9025 9948



Jacky Zhao
02 9025 9948



12 Norbis Road, Edmondson Park



Scale in metres. Indicative only. Dimensions are approximate.
All information contained here is gathered from sources we believe to be reliable.
However, we cannot guarantee its accuracy, and interested persons should rely on their enquiries.

INTERNAL AREA: 226m²
EXTERNAL AREA: 314m²
LAND AREA: 450m²