



11 Lily Avenue Riverwood NSW

3 2 2

WELCOME TO YOUR NEW HOME?.

Spanning across a generous 556sqm land with a 15.2m frontage, this inviting residence radiates warmth, comfort, and charm, making it an ideal place to call home. The property features sunlit, polished interiors that enhance its appeal for family living. Beyond its immediate allure, this property offers exciting potential for development, including the possibility of a duplex (subject to council approval). Set in a highly sought-after and ultra-convenient suburb, it presents an exceptional opportunity for a growing family or a savvy buyer looking to undertake their next project.

FEATURES OF THE PROPERTY:

[For full version visit the website](https://www.ariarealtyco.com.au)

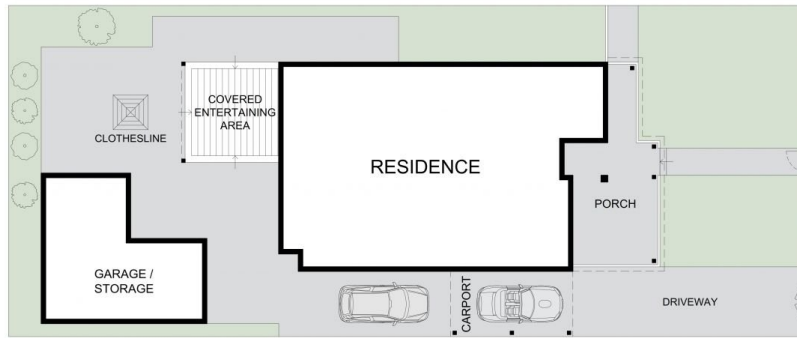
Type : House
Price : \$ 1,427,000
Land Size : 556 sqm
View : <https://www.ariarealtyco.com.au/sale/nsw/st-george/riverwood/residential/house/8118853>



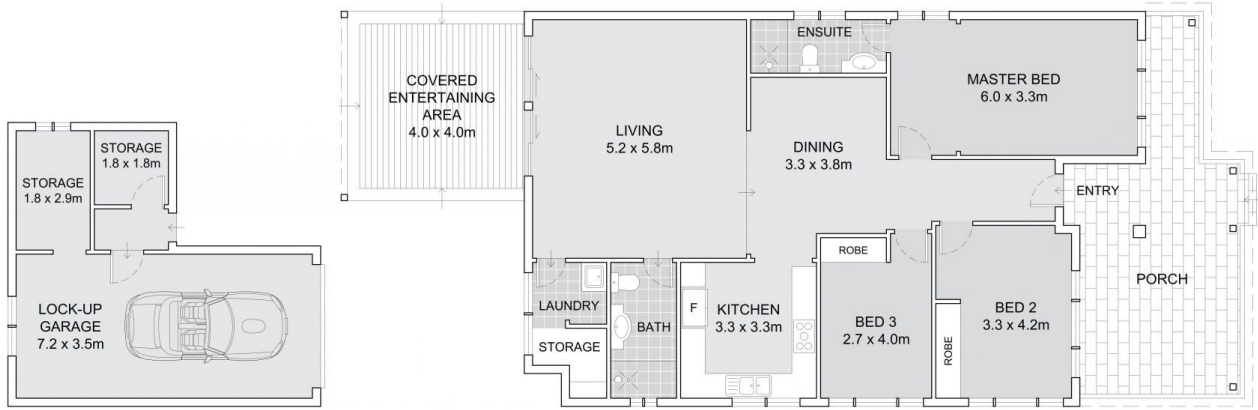
Ali Abouloukme
02 9025 9948



Michael Toumas
02 9025 9948

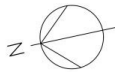


SITE PLAN



11 Lily Avenue, Riverwood

INTERNAL AREA: 160m²
EXTERNAL AREA: 423m²
LAND AREA: 557m²



Scale in metres. Indicative only. Dimensions are approximate.
All information contained here is gathered from sources we believe to be reliable.
However, we cannot guarantee its accuracy, and interested persons should rely on their enquiries.