

12 Norbis Rd Edmondson Park NSW

4 2 3

This stylish double-story brick veneer home is perfect for families who love comfort and entertaining. With high-quality finishes and contemporary design throughout, it's ideal for those who appreciate a balance of style and functionality. Plus, you'll enjoy living in a community known for its excellent schools, parks, and convenient amenities, all just moments away.

Type : House

Price : \$ 995 per week

View : <https://www.ariarealtyco.com.au/lease/nsw/liverpool-fairfield/edmondson-park/residential/house/8129528>

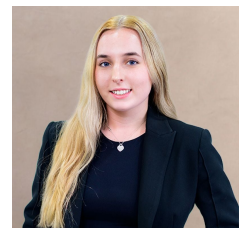
FEATURES OF THE PROPERTY:

- Four bedrooms, equipped with built-in wardrobes.
- Master bedroom with its own ensuite and a walk-in robe
- Open-plan living and dining areas to the outdoor entertaining space.
- Family-functional kitchen, features a walk-in pantry, an

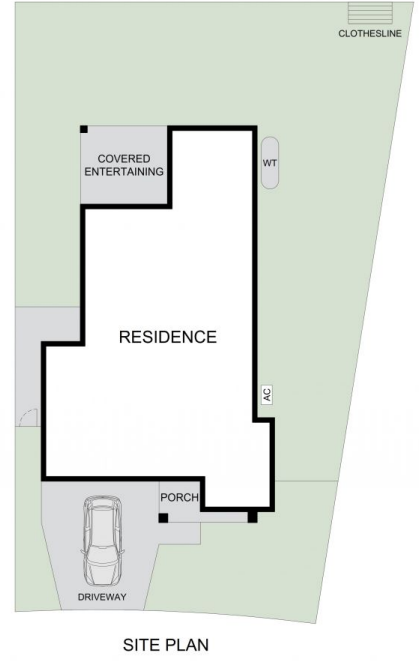
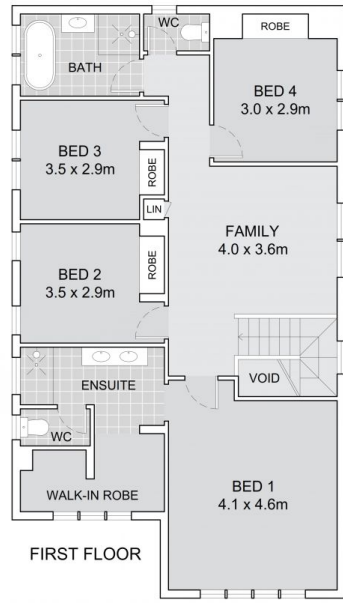
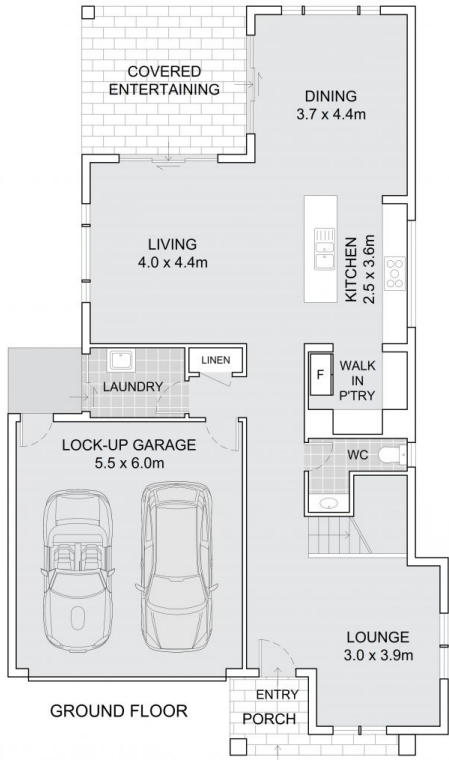
[For full version visit the website](https://www.ariarealtyco.com.au)



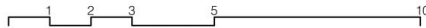
Laila Khoury
02 9025 9948



Chantal-Rose Mcvay
02 9025 9948



12 Norbis Road, Edmondson Park



Scale in metres. Indicative only. Dimensions are approximate.
 All information contained here is gathered from sources we believe to be reliable.
 However, we cannot guarantee its accuracy, and interested persons should rely on their enquiries.

INTERNAL AREA: 226m²
 EXTERNAL AREA: 314m²
 LAND AREA: 450m²