



99 Emerald Drive Eagle Vale NSW

4 🛏 2 🚿 2 🚗

WELCOME TO YOUR NEW PROPERTY?

This single-storey home presents many opportunities for the discerning investor, builder, or developer. Sitting on a generous 890sqm block, the property invites the potential for renovation, redevelopment, or creating a luxury family home (subject to Council Approval). Featuring two separate dwellings and ample indoor and outdoor living spaces, it offers an ideal setting for entertaining while providing the possibility to generate passive income from one or multiple sources.

FEATURES OF THE PROPERTY:

- Superbly situated on a sprawling 890sqm parcel, this property boasts an expansive 29.8m frontage, making it the

[For full version visit the website](https://www.ariarealtyco.com.au)

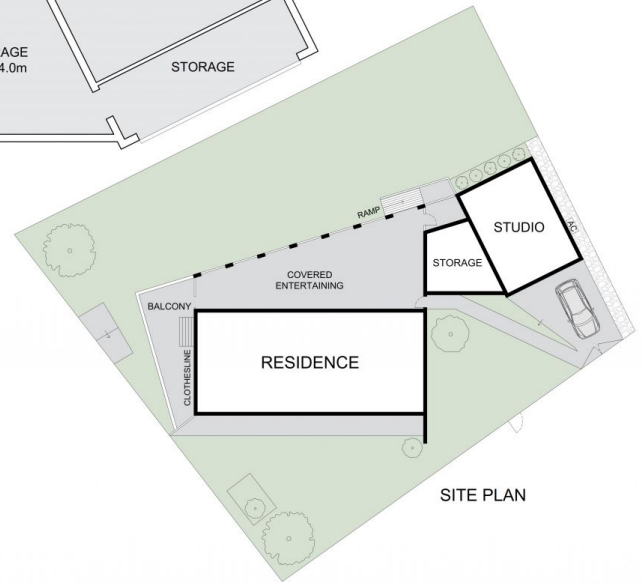
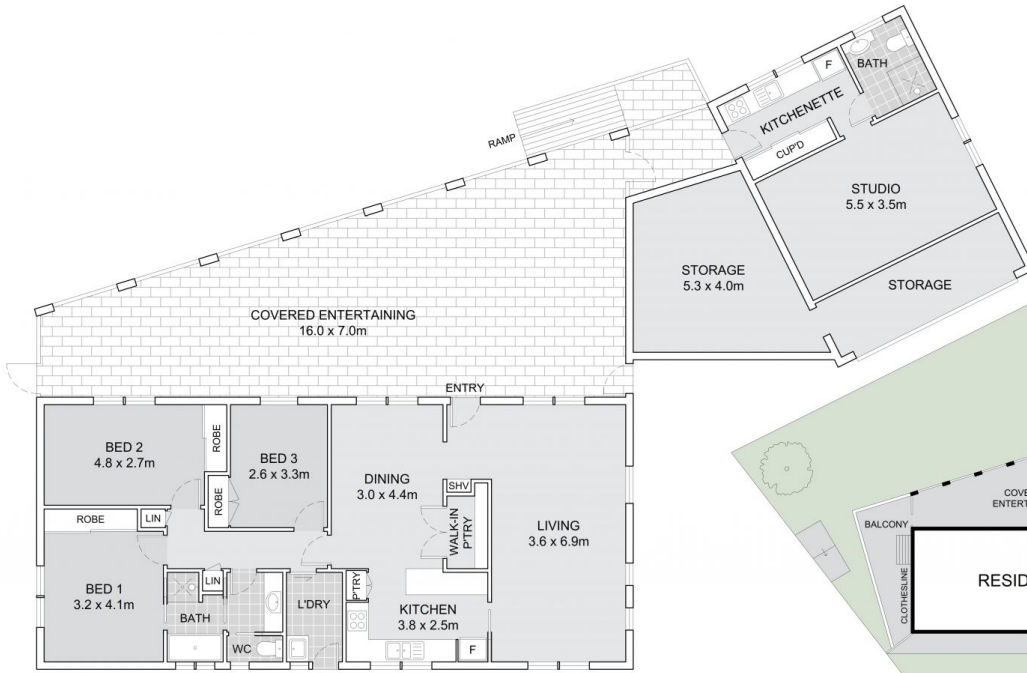
Type : House
Price : FOR SALE
Land Size : 890 sqm
View : <https://www.ariarealtyco.com.au/sale/nsw/macarthurcamden/eagle-vale/residential/house/8148283>



Ali Abouloukme
02 9025 9948

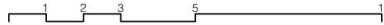


Irene Mortakis
02 9025 9948



SITE PLAN

99 Emerald Drive, Eagle Vale



Scale in metres. Indicative only. Dimensions are approximate.
 All information contained here is gathered from sources we believe to be reliable.
 However, we cannot guarantee its accuracy, and interested persons should rely on their enquiries.

INTERNAL AREA: 108m²
 STUDIO / STORAGE: 61m²
 EXTERNAL AREA: 705m²
 LAND AREA: 890m²