



6 Crusade Avenue Padstow NSW

3 2 5

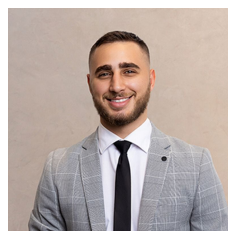
WELCOME TO YOUR NEW PROPERTY?

An inviting family home with enduring interiors and practical living features, offering effortless single-level living in a highly desirable cul-de-sac. This original residence provides a haven of family comfort, characterised by generous space and abundant natural light. It features three bedrooms, multiple living areas, and a low-maintenance backyard. This spacious traditional brick home presents families with an opportunity to enjoy a relaxed lifestyle, with the potential to move straight in or renovate to enhance its value further.

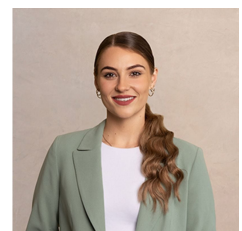
FEATURES OF THE PROPERTY:

[For full version visit the website](https://www.ariarealtyco.com.au)

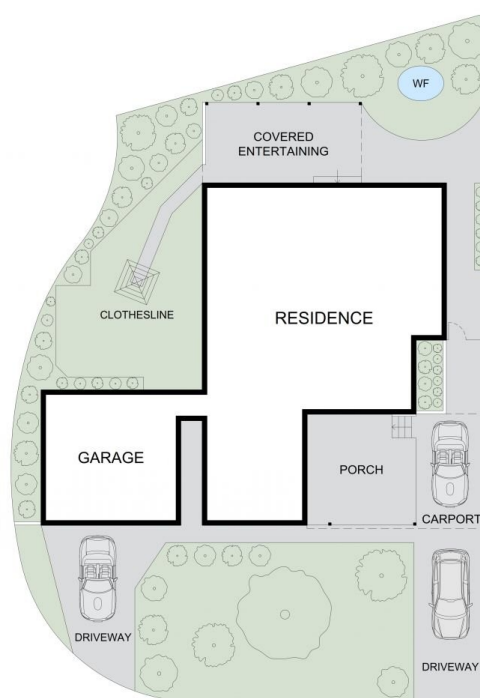
Type : House
Price : AUCTION
Land Size : 575 sqm
View : <https://www.ariarealtyco.com.au/sale/nsw/canterburybankstown/padstow/residential/house/8177038>



Ali Abouloukme
02 9025 9948



Laura Raneri
02 9025 9948



SITE PLAN

6 Crusade Avenue, Padstow



Scale in metres. Indicative only. Dimensions are approximate.
All information contained here is gathered from sources we believe to be reliable.
However, we cannot guarantee its accuracy, and interested persons should rely on their enquiries.

INTERNAL AREA: 164m²
EXTERNAL AREA: 395m²
LAND AREA: 575m²